

related products:

Cat. No. CP-0110

CentriPure P2

Gel filtration column
for 200 µl sample volume

Cat. No. CP-0106

CentriPure P5

Gel filtration column
for 0.5 ml sample volume

Cat. No. CP-0107

CentriPure P10

Gel filtration column
for 1.0 ml sample volume

Cat. No. CP-0113

CentriPure P50

Gel filtration column
for 5.0 ml sample volume



Cat. No. CP-0119

CentriPure P100

Gel filtration column
for 10 ml sample volume

Cat. No. CP-0131

CentriPure P500

Gel filtration column
for 50 ml sample volume

Cat. No. CP-0132

CentriPure Dolly Mix

Assorted columns for
protein purification
Five each of P2, P5, P10
and P25 columns

Cat. No. CP-9914

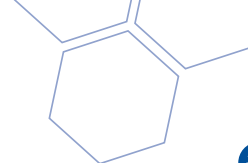
LabRack for CentriPure columns

The LabRack column
processing station makes
purification easy and
convenient

*emp BIOTECH GmbH · Robert-Rössle-Str. 10 · 13125 Berlin · Germany
Tel. +49 (0)30 94 89 22 01 · info@empbiotech.com · www.empbiotech.com*

*emp BIOTECH GmbH is an ISO 9001:2008 certified company
registration number 011001300789 (TÜV Rheinland)*

08/2015



Cat. No. CP-0108

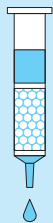
CentriPure P25

**Hydrated gel filtration column
for protein purification**



Instructions for use

1. Column Preparation



Remove the cap from the top and then the bottom cap of the **CentriPure P25** column.

Allow excess column fluid to drain (via gravity) into a suitable waste reservoir.

2. Column Equilibration



Choose a buffer for your specific application and use this same buffer for both equilibration and elution steps.

To equilibrate the column, allow the equilibration buffer to enter the gel bed completely and continue elution until approximately 25 ml of buffer has been eluted.

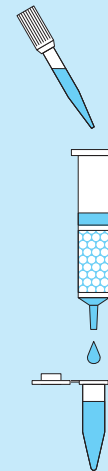
3. Sample Application



Transfer 2.5 ml sample to the **CentriPure P25** column.

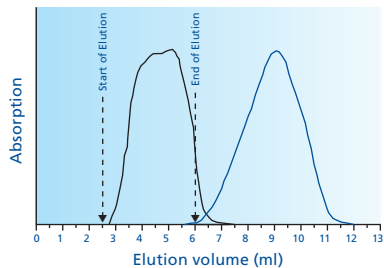
Allow the sample to enter the gel bed completely.

4. Elution

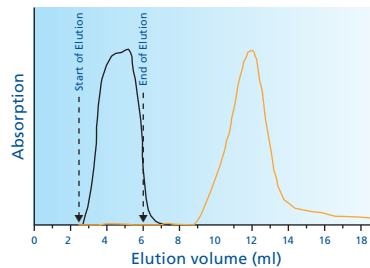


Place a tube for sample collection under the **CentriPure P25** column. Transfer 3.5 ml of elution buffer to the column and elute the cleaned sample.

typical application examples:



Desalting of protein solution (2.5 mg albumin (OvA) in 2.5 ml 0.8 M NaCl), elution with water



Elution profile overlay of albumin (2.5 mg OvA, black line – 280 nm) and free dye (1.25 μ mol FAM, orange line – 490 nm) in DMSO/NaHCO₃, elution with water (2.5 ml sample volume)