

Variable elution volumes for samples between 150 and 300 µl:

Sample volume	Forerun volume	Elution volume	Oligo recovery*	Salt removed*
150 µl	200 µl	300 µl	95 %	99.9 %
200 µl	150 µl	350 µl	94 %	99.4 %
250 µl	100 µl	400 µl	96 %	99.1 %
300 µl	0 µl	500 µl	95 %	96.2 %

* determined using 0.064 µmol/ml oligonucleotide in 0.8 M NaCl

related products:

Cat. No. CP-0103

CentriPure N5

Gel filtration column
for 0.5 ml sample volume

Cat. No. CP-0104

CentriPure N10

Gel filtration column
for 1.0 ml sample volume

Cat. No. CP-0105

CentriPure N25

Gel filtration column
for 2.5 ml sample volume

Cat. No. CP-0145

CentriPure Dolly Mix

Assorted columns for
desalting nucleic acids
Five each of N2, N5, N10
and N25 columns

Cat. No. CP-9914

LabRack for CentriPure columns

The LabRack column
processing station makes
purification easy and
convenient

emp BIOTECH GmbH · Robert-Rössle-Str. 10 · 13125 Berlin · Germany
Tel. +49 (0)30 94 89 22 01 · info@empbiotech.com · www.empbiotech.com

emp BIOTECH GmbH is an ISO 9001:2008 certified company
registration number 011001300789 (TÜV Rheinland)

08/2015



Cat. No. CP-0109

CentriPure N2

Hydrated gel filtration column for
nucleic acid purification and desalting



Instructions for use

1. Column Preparation



Remove the cap from the top and then the bottom cap of the **CentriPure N2** column.

Allow excess column fluid to drain (via gravity) into a suitable waste reservoir.

2. Column Equilibration



Choose a buffer for your specific application and use this same buffer for both equilibration and elution steps.

To equilibrate the column, allow the equilibration buffer to enter the gel bed completely and continue elution until approximately 5 ml of buffer has been eluted.

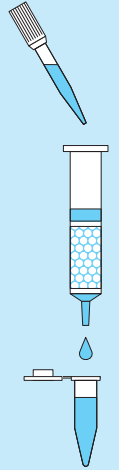
3. Sample Application



Transfer 200 μ l sample to the **CentriPure N2** column. Allow the sample to enter the gel bed completely.

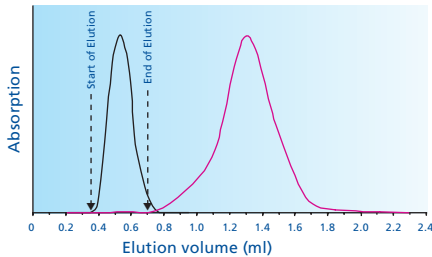
Transfer 150 μ l elution buffer to the column and allow the elution buffer to enter the gel bed completely.

4. Elution

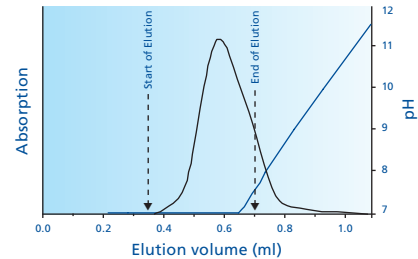


Place a tube for sample collection under the **CentriPure N2** column. Transfer 350 μ l of elution buffer to the column and elute the cleaned sample.

typical application examples:



Elution profile overlay of 0.1 μ mol 5-TAMRA and 0.04 μ mol oligonucleotide (200 μ l sample volume)



Separation of oligonucleotide from conc. ammonia after cleavage from solid support and removal of protecting groups (18-mer, Scale: 0.04 μ mol, 200 μ l vol.)