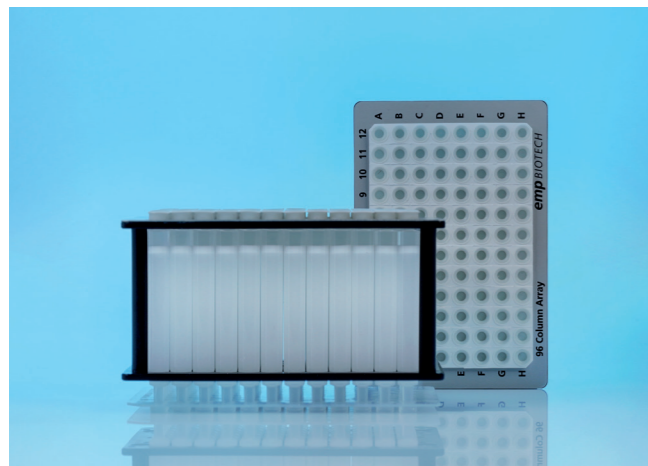


CentriPure 96

Gel Filtration Column Array 500-Z25M

for rapid purification, desalting, and buffer exchange of:

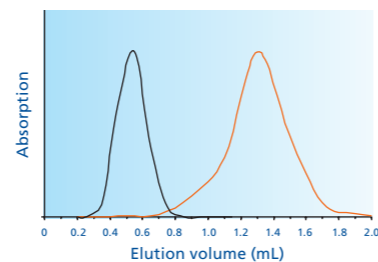
- Nucleic acids
- Proteins and antibodies



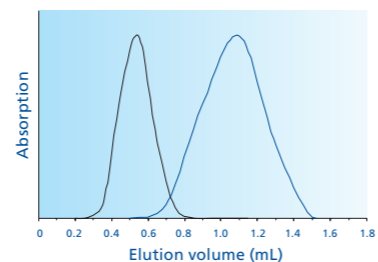
- Purifies samples of 500 μ L into a final volume of 800 μ L.
- Contains Zetadex-25 size exclusion resin.
- Simultaneously processes 96 samples.
- Designed specifically for automated systems using standard SLAS microplate footprint.

Typical application examples (proteins):

Processed with CentriPure 96 Column Array 300-Z25M



Elution profile overlay of ovalbumin (1 mg/mL) and free dye (TAMRA, 0,1 μ mol) in a 200 μ L sample volume.



Desalting of protein solution (1 mg albumin (OvA) in 1 mL 0.8 M NaCl), elution with water (200 μ L sample volume)

CentriPure Gel Filtration Column Arrays

Prod. Code: CP-0581

CentriPure 96 Column Array 400-Z25M

Gel filtration column array simultaneously processes 96 samples of 400 μ L sample volume

Prod. Code: CP-0580

CentriPure 96 Column Array 300-Z25M

Gel filtration column array simultaneously processes 96 samples of 150 - 300 μ L sample volume

coming soon:

CentriPure 24 Column Array

CentriPure 48 Column Array

Hazard and Precautionary Statements



WARNING

| | |
|----------------|---|
| H317 | Contains ProClin™ 150. May cause an allergic skin reaction. |
| P262 | Do not get in eyes, on skin, or on clothing. |
| P280 | Wear protective gloves, protective clothing, eye and face protection. |
| P302/P352 | If on skin: Gently wash with soap and water. |
| P305/P338/P351 | If in eyes: Rinse cautiously with water for several minutes. If possible, remove contact lenses and continue rinsing. |

emp BIOTECH GmbH · Robert-Rössle-Str. 10 · 13125 Berlin · Germany
Tel. +49 (0)30 94 89 22 01 · info@empbiotech.com · www.empbiotech.com

emp BIOTECH GmbH is an ISO 9001:2015 certified company
registration number 011001300789 (TÜV Rheinland)

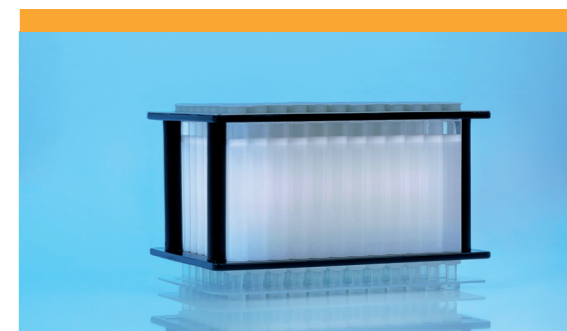
CHR-7028-01 · 05.2023

Prod. Code: CP-0582

CentriPure 96

Gel Filtration Column Array 500-Z25M

for rapid purification, desalting, and buffer exchange

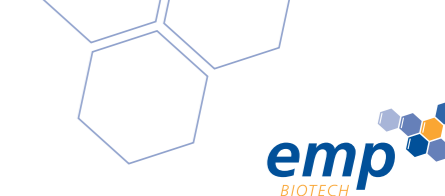


For rapid desalting or buffer exchange

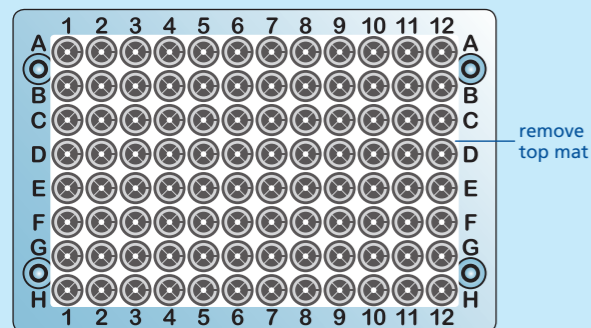
- of oligonucleotides longer than 10 bp/nt
- of proteins larger than 5 kDa
- of spheroidal nanoparticles greater than 2 nm \varnothing

Purifies samples of 500 μ L into a final volume of 800 μ L.

Instructions for use



1. Column Preparation



Carefully remove the top mat and then remove the bottom mat of the **CentriPure 96 Column Array**. The bottom mat may be replaced to store unused columns when less than 96 columns are processed.

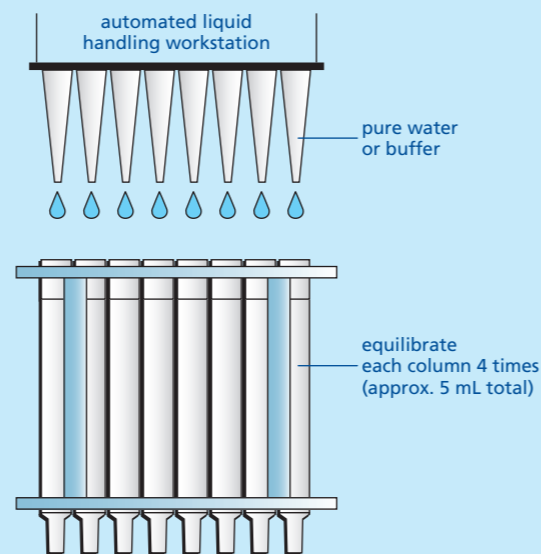
Allow excess column fluid to drain (via gravity) into a suitable waste reservoir.

If all 96 columns are processed simultaneously, a slightly reduced pressure may be used with a manifold to speed up this process.

Please note: The Array is not intended to be centrifuged!

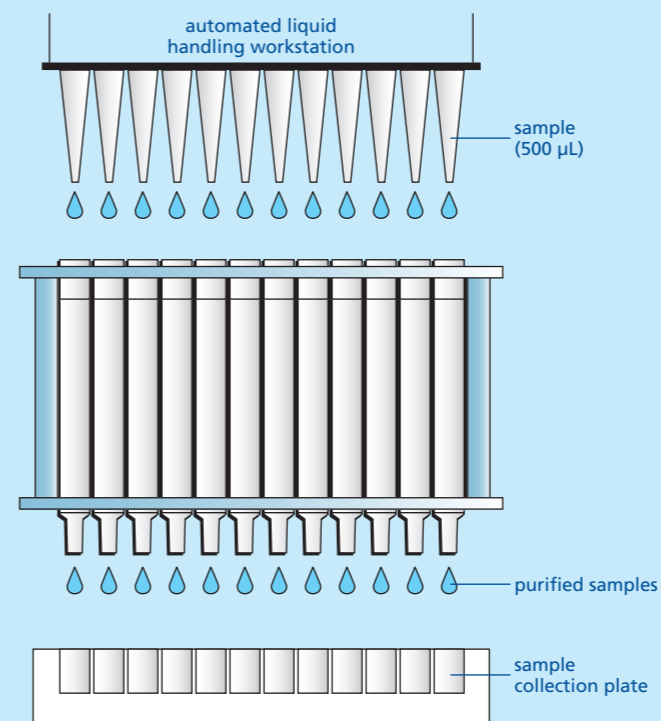
Please read the health and safety warning on the back page before use.

2. Column Equilibration



Choose a buffer for your specific application and use this same buffer for both equilibration and elution steps. To equilibrate the column, allow the buffer to enter the gel bed completely and to drain into a suitable waste reservoir.

3. Sample Application and Elution



Please note: Do not use vacuum for this step!

Transfer your sample to the **CentriPure 96 Column Array**. Allow the sample to enter the gel bed completely using a suitable waste reservoir. Do not use vacuum for sample application.

Place a collection plate for sample collection under the **CentriPure 96 Column Array**. Add 800 µL elution volume to the column and elute the purified sample.

Please read the health and safety warning on the back page before use.