

CentriPure Gel Filtration Columns

Ready-to-use columns for nucleic acids, antibodies and other proteins, and spheroidal nanoparticles

Product Code: CP-0501

CentriPure 2-Z25M

for 150–300 µL sample volume

Product Code: CP-0503

CentriPure 10-Z25M

for 1.0 mL sample volume

Product Code: CP-0504

CentriPure 25-Z25M

for 2.5 mL sample volume

Product Code: CP-0505

CentriPure 50-Z25M

for 5.0 mL sample volume

Product Code: CP-0506

CentriPure 100-Z25M

for 10 mL sample volume

Product Code: CP-0507

CentriPure 200-Z25M

for 20 mL sample volume

Product Code: CP-0508

CentriPure 300-Z25M

for 30 mL sample volume

Product Code: CP-0509

CentriPure 400-Z25M

for 40 mL sample volume

Product Code: CP-0510

CentriPure 500-Z25M

for 50 mL sample volume

Product Code: CP-0511

CentriPure 1000-Z25M

for 100 mL sample volume

Product Code: CP-0512

CentriPure 1500-Z25M

for 150 mL sample volume

Order No. CP-0132-Z005.0-001

CentriPure Trial Kit

One CentriPure - Z25M column of each for sample volumes of 200 µL, 500 µL, 1 mL, 2.5 mL, 5 mL

Hazard and Precautionary Statements



WARNING

H317	Contains ProClin™ 150. May cause an allergic skin reaction.
P262	Do not get in eyes, on skin, or on clothing.
P280	Wear protective gloves, protective clothing, eye and face protection.
P302/P352	If on skin: Gently wash with soap and water.
P305/P338/P351	If in eyes: Rinse cautiously with water for several minutes. If possible, remove contact lenses and continue rinsing.

emp BIOTECH GmbH · Robert-Rössle-Str. 10 · 13125 Berlin · Germany
Tel. +49 (0)30 94 89 22 01 · info@empbiotech.com · www.empbiotech.com

emp BIOTECH GmbH is an ISO 9001:2015 certified company
registration number 011001300789 (TÜV Rheinland)

AM-1003-03 · 04.2025

Product Code: CP-0502



CentriPure 5-Z25M

Hydrated gel filtration column for rapid purification, desalting, and buffer exchange of biomolecules including nucleic acids, proteins, and antibodies.



For rapid desalting or buffer exchange

- of oligonucleotides longer than 10 bp/nt.
- of proteins larger than 5 kDa
- of spheroidal nanoparticles greater than 2 nm Ø.

Purifies a 0.5 mL sample into a final volume of 1.0 mL.

Contains Zetadex-25 size exclusion resin, Medium grade.

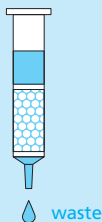
Instructions for use

1

Column Preparation

First, hold the column upright and use your thumb to gently push the top cap upward until it dislodges. Then, remove the bottom cap.

Allow any excess column fluid to drain by gravity into a suitable waste reservoir.

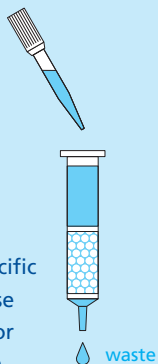


2

Column Equilibration

Select a buffer suited to your specific application and use the same buffer for both equilibration and elution.

To equilibrate the column, allow the equilibration buffer to fully enter the gel bed, then continue elution until approximately 10 mL of buffer has been collected.



3

Sample Application

Optimized for 0.5 mL.

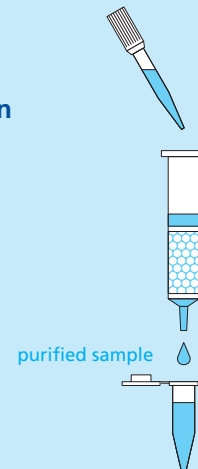
Transfer the sample to the **CentriPure 5** column and allow it to fully enter the gel bed.



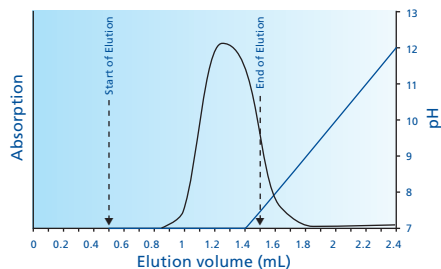
4

Elution

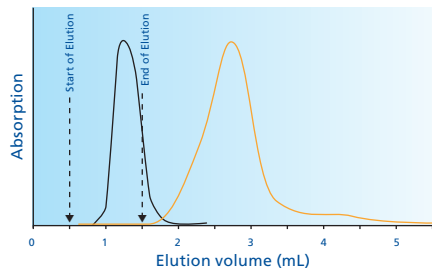
Position a collection tube beneath the **CentriPure 5** column. Add 1 mL of elution buffer and elute the purified sample.



Common examples (nucleic acids):

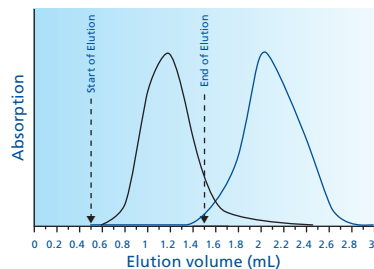


Separation of oligonucleotide from conc. ammonia after cleavage from solid support and removal of protecting groups (18-mer, Scale: 0.1 μ mol, 0.5 mL sample volume)

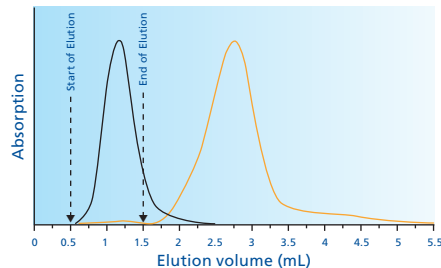


Elution profile overlay of 0.1 μ mol oligonucleotide (18-mer,) and 0.25 μ mol FAM (0.5 mL sample volume)

Common examples (proteins):



Desalting of protein solution (0.5 mg albumin (OvA) in 0.5 mL 0.8 M NaCl), elution with water



Elution profile overlay of albumin (0.5 mg OvA, black line – 280 nm) and free dye (0.25 μ mol FAM, orange line – 490 nm) in NaHCO_3 , elution with water (0.5 mL sample volume)