

## related products:

Cat. No. CP-0109

### **CentriPure N2**

Gel filtration column  
for 200 µl sample volume

Cat. No. CP-0103

### **CentriPure N5**

Gel filtration column  
for 0.5 ml sample volume

Cat. No. CP-0105

### **CentriPure N25**

Gel filtration column  
for 2.5 ml sample volume

Cat. No. CP-0112

### **CentriPure N50**

Gel filtration column  
for 5.0 ml sample volume



Cat. No. CP-0118

### **CentriPure N100**

Gel filtration column  
for 10 ml sample volume

Cat. No. CP-0123

### **CentriPure N500**

Gel filtration column  
for 50 ml sample volume

Cat. No. CP-0145

### **CentriPure Dolly Mix**

Assorted columns for  
desalting nucleic acids  
Five each of N2, N5, N10  
and N25 columns

Cat. No. CP-9914

### **LabRack for CentriPure columns**

The LabRack column  
processing station makes  
purification easy and  
convenient

*emp BIOTECH GmbH · Robert-Rössle-Str. 10 · 13125 Berlin · Germany  
Tel. +49 (0)30 94 89 22 01 · info@empbiotech.com · www.empbiotech.com*

*emp BIOTECH GmbH is an ISO 9001:2008 certified company  
registration number 011001300789 (TÜV Rheinland)*

08/2015

Cat. No. CP-0104

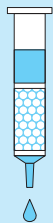
## **CentriPure N10**

**Hydrated gel filtration column for  
nucleic acid purification and desalting**



## **Instructions for use**

## 1. Column Preparation



Remove the cap from the top and then the bottom cap of the **CentriPure N10** column.

Allow excess column fluid to drain (via gravity) into a suitable waste reservoir.

## 2. Column Equilibration



Choose a buffer for your specific application and use this same buffer for both equilibration and elution steps.

To equilibrate the column, allow the equilibration buffer to enter the gel bed completely and continue elution until approximately 15 ml of buffer has been eluted.

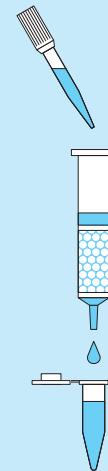
## 3. Sample Application



Transfer 1 ml sample to the **CentriPure N10** column.

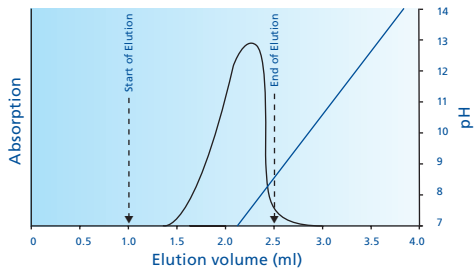
Allow the sample to enter the gel bed completely. If the sample volume is less than 1 ml, add enough equilibration buffer so that the combined volume equals 1 ml before applying it to the column.

## 4. Elution

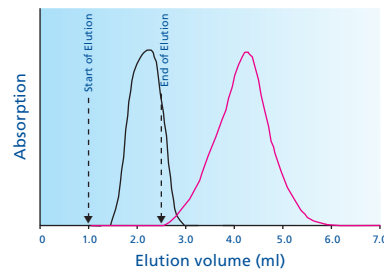


Place a tube for sample collection under the **CentriPure N10** column. Transfer 1.5 ml of elution buffer to the column and elute the cleaned sample.

### typical application examples:



Separation of conc. ammonia and oligonucleotide after cleavage from solid support and removal of protecting groups (18-mer, Scale: 0.2  $\mu$ mol, 1 ml sample volume)



Elution profile overlay of 0.5  $\mu$ mol TAMRA and 0.2  $\mu$ mol oligonucleotide (1 ml sample volume)