

related products:

Cat. No. CP-0109

CentriPure N2

Gel filtration column
for 200 µl sample volume

Cat. No. CP-0103

CentriPure N5

Gel filtration column
for 0.5 ml sample volume

Cat. No. CP-0104

CentriPure N10

Gel filtration column
for 1.0 ml sample volume

Cat. No. CP-0112

CentriPure N50

Gel filtration column
for 5.0 ml sample volume



Cat. No. CP-0118

CentriPure N100

Gel filtration column
for 10 ml sample volume

Cat. No. CP-0123

CentriPure N500

Gel filtration column
for 50 ml sample volume

Cat. No. CP-0145

CentriPure Dolly Mix

Assorted columns for
desalting nucleic acids
Five each of N2, N5, N10
and N25 columns

Cat. No. CP-9914

LabRack for CentriPure columns

The LabRack column
processing station makes
purification easy and
convenient

*emp BIOTECH GmbH · Robert-Rössle-Str. 10 · 13125 Berlin · Germany
Tel. +49 (0)30 94 89 22 01 · info@empbiotech.com · www.empbiotech.com*

*emp BIOTECH GmbH is an ISO 9001:2008 certified company
registration number 011001300789 (TÜV Rheinland)*

08/2015

Cat. No. CP-0105

CentriPure N25

Hydrated gel filtration column for
nucleic acid purification and desalting

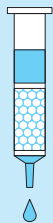


Instructions for use



emp
BIOTECH

1. Column Preparation



Remove the cap from the top and then the bottom cap of the **CentriPure N25** column.

Allow excess column fluid to drain (via gravity) into a suitable waste reservoir.

2. Column Equilibration



Choose a buffer for your specific application and use this same buffer for both equilibration and elution steps.

To equilibrate the column, allow the equilibration buffer to enter the gel bed completely and continue elution until approximately 25 ml of buffer has been eluted.

3. Sample Application



Transfer 2.5 ml sample to the **CentriPure N25** column.

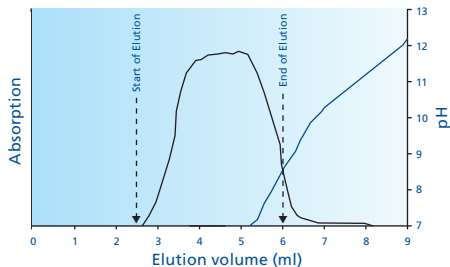
Allow the sample to enter the gel bed completely.

4. Elution

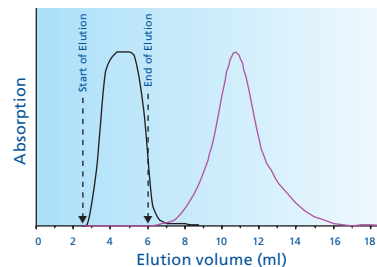


Place a tube for sample collection under the **CentriPure N25** column. Transfer 3.5 ml of elution buffer to the column and elute the cleaned sample.

typical application examples:



Separation of oligonucleotide from conc. ammonia after cleavage from solid support and removal of protecting groups (18-mer, Scale: 0.25 μ mol, 2.5 ml sample volume)



Elution profile overlay of 2.5 μ mol 5-TAMRA and 0.25 μ mol oligonucleotide (2.5 ml sample volume)