

## Variable elution volumes for samples between 150 and 300 µl:

Sample volume	Forerun volume	Elution volume	Protein recovery*	Salt removed*
150 µl	200 µl	300 µl	98 %	99.9 %
200 µl	150 µl	350 µl	97 %	99.6 %
250 µl	100 µl	400 µl	98 %	99.6 %
300 µl	0 µl	500 µl	98 %	98.9 %

\* determined using 0.064 µmol/ml oligonucleotide in 0.8 M NaCl

### related products:

Cat. No. CP-0106

#### **CentriPure P5**

Gel filtration column  
for 0.5 ml sample volume

Cat. No. CP-0107

#### **CentriPure P10**

Gel filtration column  
for 1.0 ml sample volume

Cat. No. CP-0108

#### **CentriPure P25**

Gel filtration column  
for 2.5 ml sample volume

Cat. No. CP-0132

#### **CentriPure Dolly Mix**

Assorted columns for  
protein purification  
Five each of P2, P5, P10  
and P25 columns

Cat. No. CP-9914

#### **LabRack for CentriPure columns**

The LabRack column  
processing station makes  
purification easy and  
convenient

emp BIOTECH GmbH · Robert-Rössle-Str. 10 · 13125 Berlin · Germany  
Tel. +49 (0)30 94 89 22 01 · info@empbiotech.com · www.empbiotech.com

emp BIOTECH GmbH is an ISO 9001:2008 certified company  
registration number 011001300789 (TÜV Rheinland)

08/2015

Cat. No. CP-0110

## CentriPure P2

Hydrated gel filtration column for  
protein purification and desalting



### Instructions for use

## 1. Column Preparation



Remove the cap from the top and then the bottom cap of the **CentriPure P2** column.

Allow excess column fluid to drain (via gravity) into a suitable waste reservoir.

## 2. Column Equilibration



Choose a buffer for your specific application and use this same buffer for both equilibration and elution steps.

To equilibrate the column, allow the equilibration buffer to enter the gel bed completely and continue elution until approximately 5 ml of buffer has been eluted.

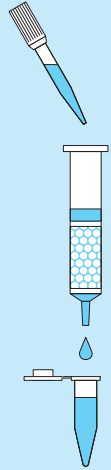
## 3. Sample Application



Transfer 200  $\mu$ l sample to the **CentriPure P2** column. Allow the sample to enter the gel bed completely.

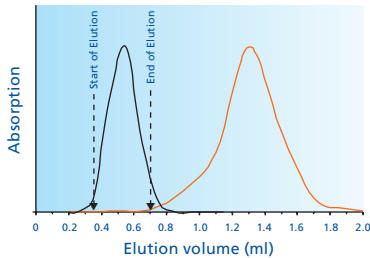
Transfer 150  $\mu$ l elution buffer to the column and allow the elution buffer to enter the gel bed completely.

## 4. Elution

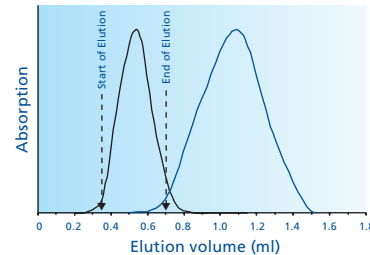


Place a tube for sample collection under the **CentriPure P2** column. Transfer 350  $\mu$ l of elution buffer to the column and elute the cleaned sample.

## typical application examples:



Elution profile overlay of ovalbumin (1 mg/ml) and free dye (TAMRA, 0,1  $\mu$ mol) in a 200  $\mu$ l sample volume.



Desalting of protein solution (1 mg albumin (OvA) in 1 ml 0.8 M NaCl), elution with water (200  $\mu$ l sample volume)