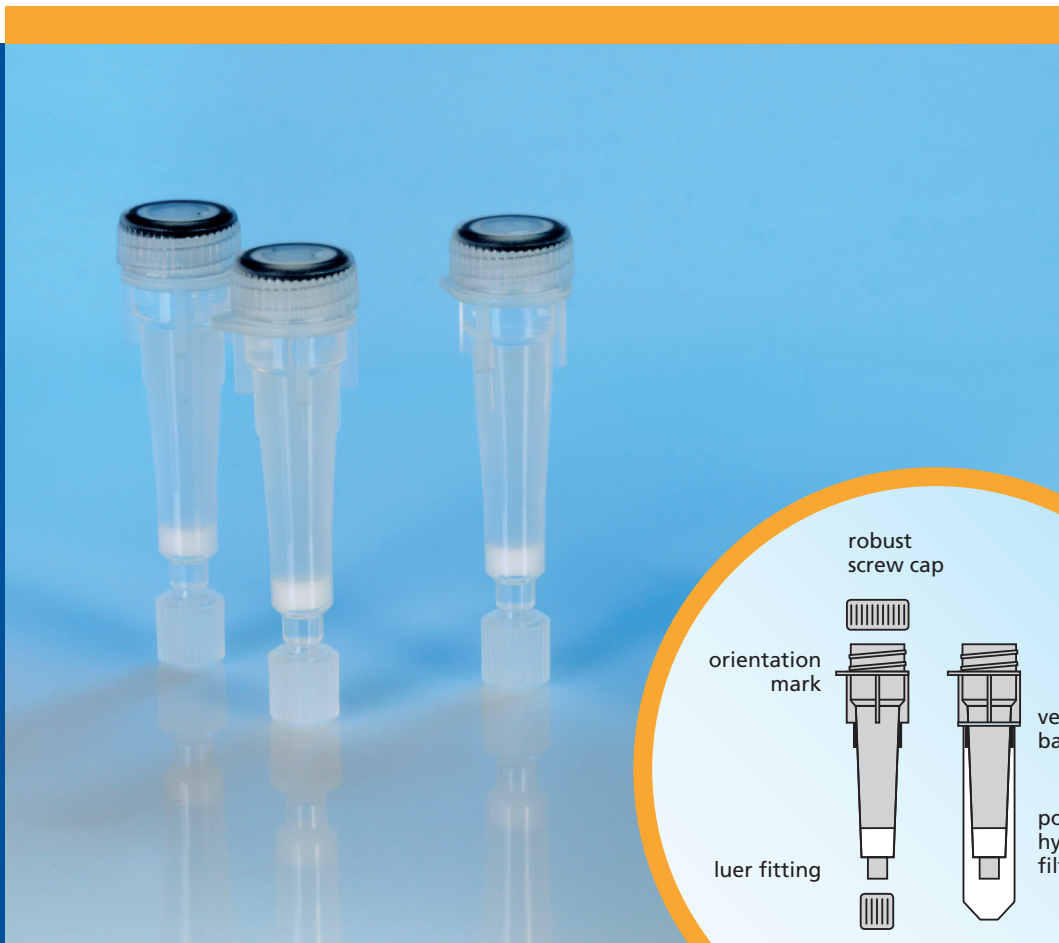


CENTRIFUGATION



## CentriPure MINI Columns

Unique conical column for greater separation.  
Sterile, hydrated and ready to use



*excellence made possible*

## CentriPure MINI Columns

Unique conical column for greater separation  
Sterile, hydrated and ready to use



CentriPure MINI Columns are designed for rapid desalting, buffer exchange, and removal of small molecular weight impurities using a centrifuge. Proteins, oligonucleotides, or spheroidal nanoparticles are simultaneously purified, desalted and eluted into pure water.

Alternatively, elution directly into PBS, TRIS, or pure water stabilized with azide is accomplished by using MINI columns which have been pre-equilibrated with these buffers.

The unique conical column design of the CentriPure MINI allows purification of samples up to 100  $\mu$ L.

Dideoxy terminators, salts, metal cations, urea, dyes, inhibitors, biotin, haptens, and other small impurities are efficiently removed in under 5 minutes.

CentriPure MINI	Desalt Z-50	Desalt Z-25	Desalt Z-25AZ	SEQ Z-50	TRIS Z-50	TRIS Z-25	PBS Z-50	PBS Z-25
Application	For desalting of proteins larger than 25 kD or nanoparticles greater than 4 nm $\emptyset$ .	For desalting of proteins larger than 5 kD, nucleic acids longer than 10 bp/nt, or nanoparticles > 2 nm $\emptyset$ .	For desalting of proteins > 5 kD, nucleic acids > 10 bp/nt, or nanoparticles > 2 nm $\emptyset$ , and simultaneous elution into aqueous 0.02% Sodium Azide.	For desalting of oligonucleotides longer than 20 bp/nt from Sanger sequencing reactions.	For purification of proteins larger than 25 kD or nanoparticles > 4 nm $\emptyset$ , and simultaneous buffer exchange to TRIS (1 mM, pH 8).	For purification of proteins larger than 5 kD or nanoparticles > 2 nm $\emptyset$ , and simultaneous buffer exchange to TRIS (1 mM, pH 8).	For purification of immunoglobulins and other proteins larger than 25 kD and simultaneous buffer exchange to PBS (8 mM, pH 7).	For purification of proteins larger than 5 kD or nanoparticles > 2 nm $\emptyset$ , and simultaneous buffer exchange to PBS (8 mM, pH 7).
Gel Matrix	Zetadex-50SF in deionized water	Zetadex-25SF in deionized water	Zetadex-25SF in deionized water and 0.02% sodium azide	Zetadex-50SF in deionized water	Zetadex-50SF in 1 mM TRIS, pH 8	Zetadex-25SF in 1 mM TRIS, pH 8	Zetadex-50SF in standard PBS, pH 7	Zetadex-25SF in standard PBS, pH 7
Gel Bed Volume	0.5 mL	0.5 mL	0.35 mL	0.5 mL	0.5 mL	0.5 mL	0.5 mL	0.5 mL
Sample Volume	2 to 100 $\mu$ L optimized for 50 $\mu$ L	2 to 100 $\mu$ L optimized for 50 $\mu$ L	2 to 100 $\mu$ L optimized for 50 $\mu$ L	2 to 100 $\mu$ L optimized for 50 $\mu$ L	2 to 100 $\mu$ L optimized for 50 $\mu$ L	2 to 100 $\mu$ L optimized for 50 $\mu$ L	2 to 100 $\mu$ L optimized for 50 $\mu$ L	2 to 100 $\mu$ L optimized for 50 $\mu$ L
Optimal Centrifuge Conditions	1000 x g for 2 min.	1000 x g for 2 min.	1000 x g for 2 min.	1000 x g for 2 min.	1000 x g for 2 min.	1000 x g for 2 min.	1000 x g for 2 min.	1000 x g for 2 min.
Removal of Dye (50 $\mu$ L 1mM 5/6 carboxyfluorescein in 0.1M NaHCO <sub>3</sub> )	> 99.9995 %	> 99.99 %	> 99 %	> 99.999 %	> 99.999 %	> 99.95 % (TAMRA dye substituted for fluorescein)	> 99.999 %	> 99.99 %
Removal of Dye (100 $\mu$ L 1mM 5/6 carboxyfluorescein in 0.1M NaHCO <sub>3</sub> )	> 99.95 %	> 99.5 %	Not recommended to use samples > 50 $\mu$ L	> 99.95 %	> 99.99 %	> 99.5 % (TAMRA dye substituted for fluorescein)	> 99.99 %	> 99.5 %
Removal of Salt (50 $\mu$ L 0.8 M NaCl)	> 99.9 % > 99.999 % (with extra wash step)	> 99.5 %	Not evaluated due to sodium azide	> 99.9 %	n. a.	n. a.	n. a.	n. a.
Removal of Salt (100 $\mu$ L 0.8 M NaCl)	> 99.0 % > 99.5 % (with extra wash step)	> 99.0 %	Not evaluated due to sodium azide	> 99.0 %	n. a.	n. a.	n. a.	n. a.
Catalog No.	MS-0101	MS-0105	MS-0109	MS-0102	MS-0103	MS-0107	MS-0104	MS-0108
Pack Sizes	4, 25, 100 columns	4, 25, 100 columns	4, 25, 100 columns	4, 25, 100 columns	4, 25, 100 columns	4, 25, 100 columns	4, 25, 100 columns	4, 25, 100 columns

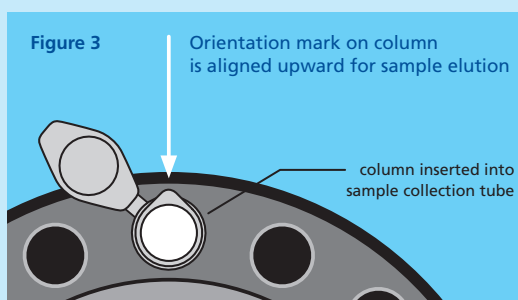
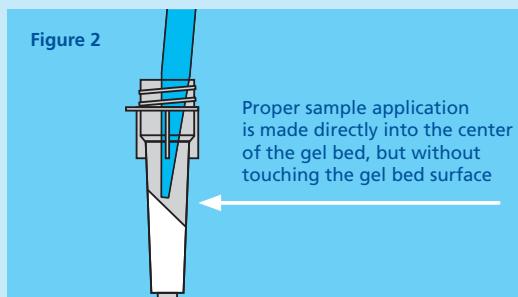
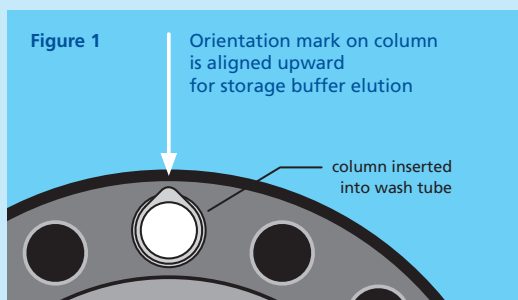
Sterile packed and ready-to-use.

CentriPure MINI Columns are available as Zetadex-25 or Zetadex-50 and pre-swollen in either pure water, TRIS, PBS, or stabilized with sodium azide.

CentriPure MINI Columns are available in kits of 4, 25 or 100 columns.

# CentriPure MINI Columns

Unique conical column for greater separation.  
Sterile, hydrated and ready to use



## 1. Column Preparation

- If the columns have been stored cold, allow to warm to room temperature before use.
- Tap gently or briefly vortex to resuspend gel and remove air bubbles.
- Remove bottom cap and then remove top cap.

## 2. Removal of storage buffer

- Place the column into a wash tube.
- Centrifuge at 1000 x g for 2 minutes. Note the column position using the orientation mark (see Fig 1.).
- Discard wash tube and eluted storage buffer.

## 3. Sample processing

- Carefully apply sample directly to center of gel bed but without touching the gel bed surface (see Fig. 2).
- Place column into a collection tube. Maintain proper column orientation (see Fig 3).
- Centrifuge at 1000 x g for 2 minutes to elute the purified sample.

